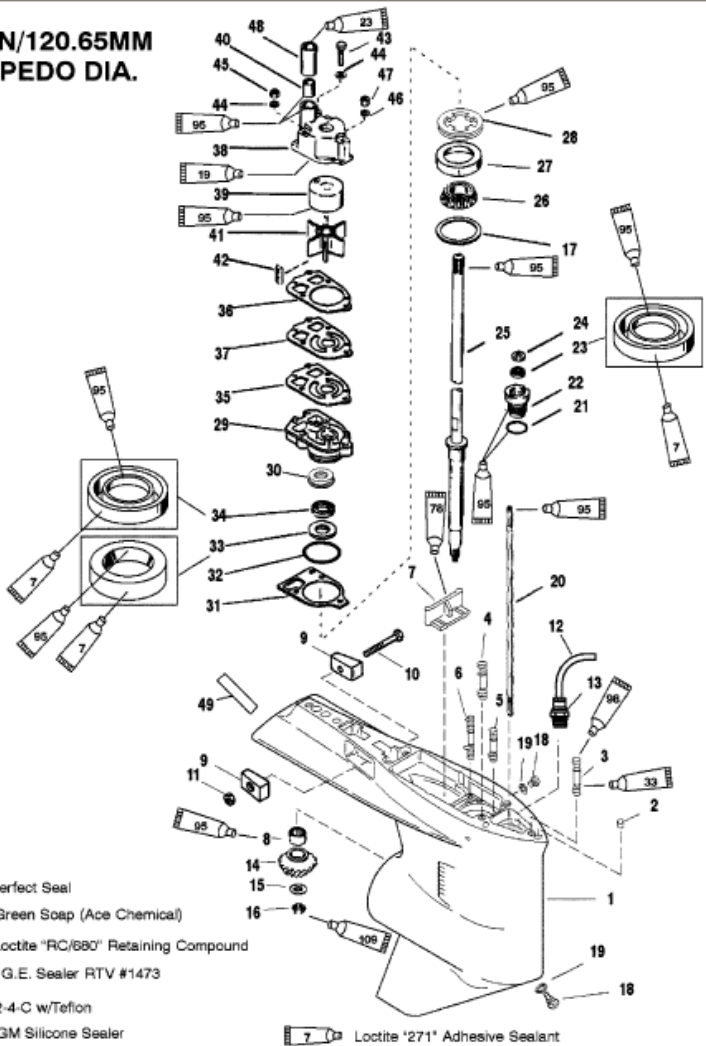


**4.75 IN/120.65MM
 TORPEDO DIA.**



GEAR HOUSING (DRIVE SHAFT)(COUNTER ROTATION)

Parts List					
Ref	Class	Part	Description	Qty	Footnote
1	1647	9148T93	GEAR HOUSING (BASIC)	1	
2	17	43044	DOWEL PIN	2	
3	16	18978 3	STUD (3-11/16 IN.)	1	
4	16	57920 3	STUD (2-1/16 IN.)	2	
5	16	56297 2	STUD (3-3/8 IN.)	1	
6	16	30667	STUD (3-1/8 IN.)	2	
7		67891	FILLER BLOCK	1	
8	31	42647A 1	ROLLER BEARING	1	23
9		826134Q	ANODE	2	
10	10	40003 33	SCREW	1	
11	11	826833 6	NUT	1	
12	32	859449 71	HOSE (12 IN.)	1	
13	22	859432	FITTING	1	
14		NSS	PINION GEAR	1	(1.87:1 - 15 TEETH - 150) (PART C
14	43	44101T 3	PINION GEAR	1	[2.1 - 14 TEETH - 135]
15	12	92721	WASHER	1	22,23
16	11	35921	NUT	1	22,23
17	15	42637A 1	SHIM SET	AR	22,23
18	10	79953Q 2	SCREW-DRAIN	2	
19	12	19183	WASHER	2	15,18
20		78902 2	SHIFT SHAFT	1	
21	25	25439	O-RING	1	2,15
22	23	77631A 2	BUSHING ASSEMBLY	1	15
23	26	816464 1	OIL SEAL	1	15
24	12	77674	WASHER-RUBBER	1	
25	45	44209 1	DRIVE SHAFT	1	
26	31	36387A 1	ROLLER BEARING	1	23
27		NSS	CUP	1	23
28		824519 1	RETAINER	1	
29	46	42579A 3	WATER PUMP BASE	1	
30		NSS	RETAINER	1	
31	27	42631 1	GASKET	1	2,15,18
32	25	90011	O-RING	1	2,15,18
33	26	89238	OIL SEAL	1	15
34	26	16977	OIL SEAL	1	15
35	27	85608 1	GASKET-LOWER	1	2,15,18
36	27	858524	GASKET-UPPER	1	2,15,18
37		32435	FACE PLATE	1	18
38	46	96148T 1	WATER PUMP BODY ASSEMBLY	1	18
39		48752T	INSERT	1	18
40	26	28970	SEAL RUBBER	1	2,15,18